



Moon Mouse: A Space Odyssey

# social story

2025-26 Sensory-Friendly Programming



Specifically designed for children with autism, Down syndrome and other sensory processing differences and special needs.



1

When I go to Dallas Children's Theater to see *Moon Mouse: A Space Odyssey*, I will see a sign that says "Rosewood Center for Family Arts".



2

When I enter Dallas Children's Theater, I will be in the lobby.



3

There will be activities in the lobby.



**4**

We might have to go to the Box Office to get our tickets. We may have to stand in line and wait.



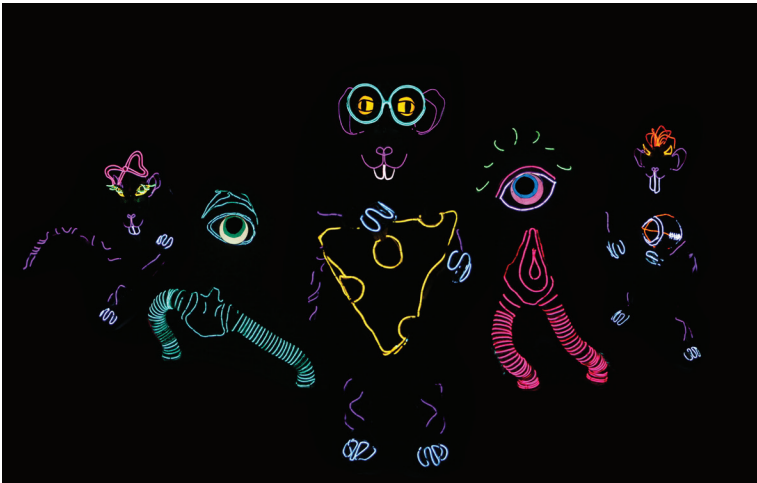
**5**

When it's time to go into the theater, a Helper in a white shirt will scan my ticket.



**6**

During the show, I will sit with my family. There may be some people I don't know sitting near me.



7

During the play, the actors will be on stage.



8

At the end of the show, the actors will bow and the audience will clap. If the clapping is too loud, I can cover my ears.



9

After the actors bow, they will do a brief demonstration and talk-back with the audience and I will get to see how they create their creatures and how they perform with them.